

UNDERMOUNTS

A beautiful countertop should include a sink that functions just as beautifully. Designed to offer outstanding design, selection and value, Revere Undermounts are made of 18 gauge stainless steel for superior durability (the lower the gauge the thicker the steel). And our sinks offer full undercoating and sound dampening pads to absorb sound, reduce condensation and maintain water temperature. Graceful lines and a satin finish make Revere an excellent choice for all countertop materials. Remember, an undermount sink is a permanent installation. Make your choice one your customers will love.



RCFU12FB

Gauge: 18 | **Finish:** Satin
Overall Dimensions: 14 $\frac{3}{8}$ " Diameter
Bowl: 12" Diameter x 6" | **Drain Opening:** 3 $\frac{1}{2}$ "
Undercoating: Sound dampening pad with full spray undercoating
Minimum Cabinet Size: 18"

Optional Accessories

Drain
 S1



RCFU1210[†]

Gauge: 18 | **Finish:** Satin
Overall Dimensions: 14 $\frac{1}{2}$ " x 12 $\frac{1}{2}$ "
Bowl: 12" x 10" x 6 $\frac{1}{2}$ " | **Drain Opening:** 3 $\frac{1}{2}$ "
Undercoating: Sound dampening pad with full spray undercoating
Minimum Cabinet Size: 18"

Optional Accessories

Drain
 S1



RCFU1318[†]

Gauge: 18 | **Finish:** Satin
Overall Dimensions: 16" x 20 $\frac{1}{2}$ "
Bowl: 13 $\frac{1}{2}$ " x 18" x 8" | **Drain Opening:** 3 $\frac{1}{2}$ "
Undercoating: Sound dampening pad with full spray undercoating
Minimum Cabinet Size: 21"

Optional Accessories

Drain	Cutting Board	Bottom Grid
S1	CBR1316*	GBG1318SS



RCFU1618[†]

Gauge: 18 | **Finish:** Satin
Overall Dimensions: 16 $\frac{1}{2}$ " x 18 $\frac{1}{4}$ "
Bowl: 14" x 15 $\frac{3}{4}$ " x 8" | **Drain Opening:** 3 $\frac{1}{2}$ "
Undercoating: Sound dampening pad with full spray undercoating
Minimum Cabinet Size: 21"

Optional Accessories

Drain	Bottom Grid
S1	GBG1415SS



RCFU2115DFBG

Sink kit includes:
 RCFU2115 Sink, LK5000CR Faucet, GBG2115SS Bottom Grid and Drain

Gauge: 18 | **Finish:** Satin
Overall Dimensions: 23 $\frac{1}{2}$ " x 18 $\frac{1}{4}$ "
Bowl: 21" x 15 $\frac{3}{4}$ " x 8" | **Drain Opening:** 3 $\frac{1}{2}$ "
Undercoating: Sound dampening pad with full spray undercoating
Minimum Cabinet Size: 27"

Optional Accessories

Cutting Board
 RCB1516*



RCFU2115DF

Sink kit includes:
 RCFU2115 Sink, LK1501CR Faucet and Drain

Gauge: 18 | **Finish:** Satin
Overall Dimensions: 23 $\frac{1}{2}$ " x 18 $\frac{1}{4}$ "
Bowl: 21" x 15 $\frac{3}{4}$ " x 8" | **Drain Opening:** 3 $\frac{1}{2}$ "
Undercoating: Sound dampening pad with full spray undercoating
Minimum Cabinet Size: 27"

Optional Accessories

Cutting Board	Bottom Grid
RCB1516*	GBG2115SS

UNDERMOUNTS



Revere undermounts offer **Quality, Availability and Value** for all your application needs. Choose a **Revere Sink Kit** for a winning combination!



RCFU2115[†]

Gauge: 18 | **Finish:** Satin
Overall Dimensions: 23½" x 18¼"
Bowl: 21" x 15¾" x 8" | **Drain Opening:** 3½"
Undercoating: Sound dampening pad with full spray undercoating
Minimum Cabinet Size: 27"

Optional Accessories

Drain	Cutting Board	Bottom Grid
S1	RCB1516*	GBG2115SS



RCFU2416

Gauge: 18 | **Finish:** Satin
Overall Dimensions: 26½" x 18½"
Bowl: 24" x 16" x 8" | **Drain Opening:** 3½"
Undercoating: Sound dampening pad with full spray undercoating
Minimum Cabinet Size: 30"

Optional Accessories

Drain	Cutting Board	Bottom Grid
S1	CB1713	GBG2416SS



RCFU2816[†]

Gauge: 18 | **Finish:** Satin
Overall Dimensions: 30½" x 18¼"
Bowl: 28" x 15¾" x 8" | **Drain Opening:** 3½"
Undercoating: Sound dampening pad with full spray undercoating
Minimum Cabinet Size: 36"

Optional Accessories

Drain	Bottom Grid
S1	GBG2816SS



RCFU3118DFBG

Sink kit includes: RCFU3118 Sink, LK500CR Faucet, GBG1415SS Bottom Grid and 2 Drains

Gauge: 18 | **Finish:** Satin
Overall Dimensions: 31¾" x 18¼"
Each Bowl: 14" x 15¾" x 8" | **Drain Opening:** 3½"
Undercoating: Sound dampening pad with full spray undercoating
Minimum Cabinet Size: 36"

Optional Accessories

Bottom Grid
GBG1415SS



RCFU3118DF

Sink kit includes: RCFU3118 Sink, LK1501CR Faucet and 2 Drains

Gauge: 18 | **Finish:** Satin
Overall Dimensions: 31¾" x 18¼"
Each Bowl: 14" x 15¾" x 8" | **Drain Opening:** 3½"
Undercoating: Sound dampening pad with full spray undercoating
Minimum Cabinet Size: 36"

Optional Accessories

Bottom Grid
GBG1415SS



RCFU3118[†] RCFU31189

Gauge: 18 | **Finish:** Satin
Overall Dimensions: 31¾" x 18¼"
RCFU3118 Each Bowl: 14" x 15¾" x 8"
RCFU31189 Each Bowl: 14" x 15¾" x 9"
Drain Opening: 3½"
Undercoating: Sound dampening pad with full spray undercoating
Minimum Cabinet Size: 36"

Optional Accessories

Drain	Bottom Grid
S1	GBG1415SS

*Sink must be installed with a ½" reveal for cutting board to fit properly. | †Also available nested in multi packs. All dimensions in inches. To convert to millimeters, multiply by 25.4.



All Revere RCFU undermount sinks

UNDERMOUNTS

From contemporary to traditional, Revere provides a wonderful selection for today's solid surface countertop materials. This line is designed and priced to offer outstanding value.



RCFU312010RDFBG (shown)

RCFU312010LDFBG

Sink kit includes: RCFU312010R(L) Sink, LK5000CR Faucet, GBG1318SS Bottom Grid and 2 Drains

Gauge: 18 | **Finish:** Satin
Overall Dimensions: 31¼" x 20½"
Large Bowl: 13½" x 18" x 10"
Small Bowl: 14" x 15¾" x 8"
Drain Opening: 3½"

Undercoating: Sound dampening pad with full spray undercoating
Minimum Cabinet Size: 36"

Optional Accessories

Bottom Grid
 GBG1415SS (Small Bowl)

RCFU312010RDF (shown)

RCFU312010LDF

Sink kit includes: RCFU312010R(L) Sink, LK1501CR Faucet and 2 Drains

Gauge: 18 | **Finish:** Satin
Overall Dimensions: 31¼" x 20½"
Large Bowl: 13½" x 18" x 10"
Small Bowl: 14" x 15¾" x 8"
Drain Opening: 3½"

Undercoating: Sound dampening pad with full spray undercoating
Minimum Cabinet Size: 36"

Optional Accessories

Bottom Grid
 GBG1415SS (Small Bowl)
 GBG1318SS (Large Bowl)

RCFU312010R† (shown)

RCFU312010L†

Gauge: 18 | **Finish:** Satin
Overall Dimensions: 31¼" x 20½"
Large Bowl: 13½" x 18" x 10"
Small Bowl: 14" x 15¾" x 8"
Drain Opening: 3½"

Undercoating: Sound dampening pad with full spray undercoating
Minimum Cabinet Size: 36"

Optional Accessories

Drain	Bottom Grid
S1	GBG1415SS (Small Bowl) GBG1318SS (Large Bowl)

All Revere RCFU undermount sinks



UNDERMOUNTS



RCFU2118DFBG

Sink kit includes: RCFU2118 Sink, LK5000CR Faucet, GOBG2118SS Bottom Grid and Drain

Gauge: 18 | Finish: Satin
 Overall Dimensions: 23½" x 21½"
 Bowl: 21" x 18⅝" x 8" | Drain Opening: 3½"
 Undercoating: Sound dampening pad with full spray undercoating
 Minimum Cabinet Size: 27"



RCFU2118DF

Sink kit includes: RCFU2118 Sink, LK1501CR Faucet and Drain

Gauge: 18 | Finish: Satin
 Overall Dimensions: 23½" x 21½"
 Bowl: 21" x 18⅝" x 8" | Drain Opening: 3½"
 Undercoating: Sound dampening pad with full spray undercoating
 Minimum Cabinet Size: 27"

Optional Accessories

Bottom Grid
 GOBG2118SS



RCFU2118†

Gauge: 18 | Finish: Satin
 Overall Dimensions: 23½" x 21½"
 Bowl: 21" x 18⅝" x 8" | Drain Opening: 3½"
 Undercoating: Sound dampening pad with full spray undercoating
 Minimum Cabinet Size: 27"

Optional Accessories

Drain	Bottom Grid
S1	GOBG2118SS



RCFU3119RDFBG (shown)

RCFU3119LDFBG

Sink kit includes: RCFU3119R(L) Sink, LK5000CR Faucet, GOBG1617SS Bottom Grid and 2 Drains

Gauge: 18 | Finish: Satin
 Overall Dimensions: 31¼" x 20"
 Large Bowl: 16" x 17½" x 8"
 Small Bowl: 11½" x 15" x 8"
 Drain Opening: 3½"
 Undercoating: Sound dampening pad with full spray undercoating
 Minimum Cabinet Size: 36"

Optional Accessories

Bottom Grid
 GOBG1115SS (Small Bowl)



RCFU3119RDF (shown)

RCFU3119LDF

Sink kit includes: RCFU3119R(L) Sink, LK1501CR Faucet and 2 Drains

Gauge: 18 | Finish: Satin
 Overall Dimensions: 31¼" x 20"
 Large Bowl: 16" x 17½" x 8"
 Small Bowl: 11½" x 15" x 8"
 Drain Opening: 3½"
 Undercoating: Sound dampening pad with full spray undercoating
 Minimum Cabinet Size: 36"

Optional Accessories

Bottom Grid
 GOBG1115SS (Small Bowl)
 GOBG1617SS (Large Bowl)



RCFU3119R† (shown)

RCFU3119L†

Gauge: 18 | Finish: Satin
 Overall Dimensions: 31¼" x 20"
 Large Bowl: 16" x 17½" x 8"
 Small Bowl: 11½" x 15" x 8"
 Drain Opening: 3½"
 Undercoating: Sound dampening pad with full spray undercoating
 Minimum Cabinet Size: 36"

Optional Accessories

Bottom Grid	
S1	GOBG1115SS (Small Bowl) GOBG1617SS (Large Bowl)

UNDERMOUNTS



RVRU12179

NEW! RVRU12179DBG

Sink kit includes: RVRU12179 Sink, GFOBG1217SS
Bottom Grid and Drain

Gauge: 18 | **Finish:** Polished satin finish
Overall Dimensions: 13½" x 18½"
Bowl: 12" x 17" x 9" | **Drain Opening:** 3½"
Undercoating: Sound dampening pad
with full spray undercoating
Minimum Cabinet Size: 18"

Optional Accessories

Drain	Cutting Board	Bottom Grid
S1	LKCBF17HW	GFOBG117SS



RVRU17179

NEW! RVRU17179DBG

Sink kit includes: RVRU17179 Sink, GFOBG1717SS
Bottom Grid and Drain

Gauge: 18 | **Finish:** Polished satin finish
Overall Dimensions: 18½" x 18½"
Bowl: 17" x 17" x 9" | **Drain Opening:** 3½"
Undercoating: Sound dampening pad
with full spray undercoating
Minimum Cabinet Size: 24"

Optional Accessories

Drain	Cutting Board	Bottom Grid
S1	LKCBF17HW	GFOBG1717SS



RVRU24179R

NEW! RVRU24179RDBG

Sink kit includes: RVRU24179R Sink, GFOBG2417SS
Bottom Grid and Drain

Gauge: 18 | **Finish:** Polished satin finish
Overall Dimensions: 25½" x 18½"
Bowl: 24" x 17" x 9" | **Drain Opening:** 3½"
Undercoating: Sound dampening pad
with full spray undercoating
Minimum Cabinet Size: 27"

Optional Accessories

Drain	Cutting Board	Bottom Grid
S1	LKCBF17HW	GFOBG2417SS



RVRU30179R

NEW! RVRU30179RDBG

Sink kit includes: RVRU30179R Sink, GFOBG3017SS
Bottom Grid and Drain

Gauge: 18 | **Finish:** Polished satin finish
Overall Dimensions: 31½" x 18½"
Bowl: 30" x 17" x 9" | **Drain Opening:** 3½"
Undercoating: Sound dampening pad
with full spray undercoating
Minimum Cabinet Size: 36"

Optional Accessories

Drain	Cutting Board	Bottom Grid
S1	LKCBF17HW	GFOBG3017RSS



RVRUF30179R

NEW! RVRUF30179RDBG

Sink kit includes: RVRUF30179R Sink, GFOBG3017SS
Bottom Grid and Drain

Gauge: 18 | **Finish:** Polished satin finish
Overall Dimensions: 35⅞" x 20¼"
Bowl: 30" x 17" x 9" | **Drain Opening:** 3½"
Undercoating: Sound dampening pad
with full spray undercoating
Minimum Cabinet Size: 36"

Optional Accessories

Drain	Bottom Grid
S1	GFOBG3017RSS

UNDERMOUNTS



RVRU31179

NEW! RVRU31179DBG

Sink kit includes: RVRU31179 Sink, 2 GFOBG1517SS Bottom Grids and 2 Drains

Gauge: 18 | **Finish:** Polished satin finish

Overall Dimensions: 31½" x 18½"

Bowl: 14½" x 17" x 9" | **Drain Opening:** 3½"

Undercoating: Sound dampening pad with full spray undercoating

Minimum Cabinet Size: 36"

Optional Accessories

Drain	Cutting Board	Bottom Grid
S1	LKCBF17HW	GFOBG1517SS



RVRU32179L (shown)

RVRU32179R

NEW! RVRU32179L(R)DBG

Sink kit includes: RVRU32179L(R) Sink, GFOBG1217SS and GFOBG1717SS Bottom Grids and 2 Drains

Gauge: 18 | **Finish:** Polished satin finish

Overall Dimensions: 31½" x 18½"

Large Bowl: 17" x 17" x 9"

Small Bowl: 12" x 17" x 9"

Drain Opening: 3½"

Undercoating: Sound dampening pad with full spray undercoating

Minimum Cabinet Size: 36"

Optional Accessories

Drain	Cutting Board	Bottom Grid
S1	LKCBF17HW	GFOBG1217SS (Small Bowl) GFOBG1717SS (Large Bowl)



RVRUF32179R

NEW! RVRUF32179RDBG

Sink kit includes: RVRUF32179R Sink, GFOBG1217SS and GFOBG1717SS Bottom Grids and 2 Drains

Gauge: 18 | **Finish:** Polished satin finish

Overall Dimensions: 35⅞" x 20¼"

Large Bowl: 17" x 17" x 9"

Small Bowl: 12" x 17" x 9"

Drain Opening: 3½"

Undercoating: Sound dampening pad with full spray undercoating

Minimum Cabinet Size: 36"

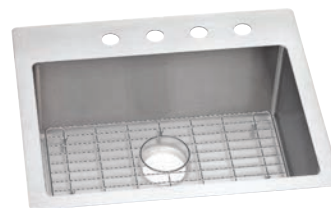
Optional Accessories

Drain	Bottom Grid
S1	GFOBG1217SS (Small Bowl) GFOBG1717SS (Large Bowl)

*Sink must be installed with a ½" over hang for cutting board to fit properly. All dimensions in inches. To convert to millimeters, multiply by 25.4.

UNIVERSAL MOUNT SINK KITS

Slim Rim feature allows the sink to be installed as an undermount or top mount. One bottom grid included with each sink.



NEW! RVS13169BG

Sink kit includes: RVS13169 Sink and CTBG0909SS Bottom Grid

Gauge: 18 | **Finish:** Polished satin finish
Overall Dimensions: 13" x 16"
Bowl: 10½" x 10¾" x 9" | **Drain Opening:** 3½"
Faucet Holes: 1, 2, MR2 or 3
Undercoating: Sound dampening pad with full spray undercoating
Minimum Cabinet Size: 18"

Optional Accessories

Drain
S1

NEW! RVS15159BG

Sink kit includes: RVS15159 Sink and CTBG1108SS Bottom Grid

Gauge: 18 | **Finish:** Polished satin finish
Overall Dimensions: 15" x 15"
Bowl: 12½" x 9¾" x 9" | **Drain Opening:** 3½"
Faucet Holes: 1, 2, MR2 or 3
Undercoating: Sound dampening pad with full spray undercoating
Minimum Cabinet Size: 24"

Optional Accessories

Drain
S1

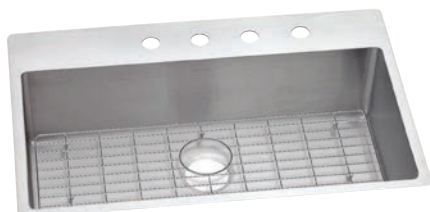
NEW! RVS25229BG

Sink kit includes: RVS25229 Sink and CTBG2115SS Bottom Grid

Gauge: 18 | **Finish:** Polished satin finish
Overall Dimensions: 25" x 22"
Bowl: 22½" x 16¾" x 9" | **Drain Opening:** 3½"
Faucet Holes: 1, 2, FR2, MR2, 3, 4 or 5
Undercoating: Sound dampening pad with full spray undercoating
Minimum Cabinet Size: 27"

Optional Accessories

Drain
S1



NEW! RVSRS33229BG

Sink kit includes: RVSRS33229 Sink and CTBG2915SS Bottom Grid

Gauge: 18 | **Finish:** Polished satin finish
Overall Dimensions: 33" x 22"
Bowl: 30½" x 16¾" x 9" | **Drain Opening:** 3½"
Faucet Holes: 1, 2, FR2, ML2, MR2, 3, 4 or 5
Undercoating: Sound dampening pad with full spray undercoating
Minimum Cabinet Size: 36"

Optional Accessories

Drain
S1

NEW! RVSRO33229RBG

Sink kit includes: RVSRO33229R Sink and CTBG1515SS Bottom Grid (Large Bowl)

Gauge: 18 | **Finish:** Polished satin finish
Overall Dimensions: 33" x 22"
Large Bowl: 16" x 16¾" x 9"
Small Bowl: 13½" x 16¾" x 9" | **Drain Opening:** 3½"
Faucet Holes: 1, 2, FR2, MR2, 3, 4 or 5
Undercoating: Sound dampening pad with full spray undercoating
Minimum Cabinet Size: 36"

Optional Accessories

Drain Bottom Grid
S1 CTBG1215SS

NEW! RVS33229BG

Sink kit includes: RVS33229 Sink and CTBG1315SS Bottom Grid

Gauge: 18 | **Finish:** Polished satin finish
Overall Dimensions: 33" x 22"
Each Bowl: 14¾" x 16¾" x 9" | **Drain Opening:** 3½"
Faucet Holes: 1, 2, FR2, MR2, 3, 4 or 5
Undercoating: Sound dampening pad with full spray undercoating
Minimum Cabinet Size: 36"

Optional Accessories

Drain
S1